

SOLD

25-27 Bunbury St, Glenorchy Via, Stawell



Country Outside – City Inside

Don't judge this book by its cover as there is much more here than meets the eye.

An affordable upmarket weekender or a secure base for travellers on two thousand square metres (half acre) in the quiet village of Glenorchy this little getaway provides comfortable living space, private covered outdoor entertaining and garden area, nine by five and a half metre lockable storage shed on slab with power plus an additional six by three metre steel garden shed.

Twenty four kms from the Stawell, fifty one kms from Horsham and forty kms the Grampians National Park Glenorchy is located on the Wimmera River in the Northern Grampians Shire and has a population of around one hundred and thirty.

The above information provided has been furnished to us by the vendor/s. We have not verified whether or not that information is accurate and do not have any belief in one way or the other in its accuracy. We do not accept any responsibility to any person for its accuracy and do no more than pass it on. All interested parties should make and rely upon their own inquiries in order to determine whether or not this information is in fact accurate.

 1  1  0.50 ac

Price SOLD for
\$177,000

Property Type Residential

Property ID 2747

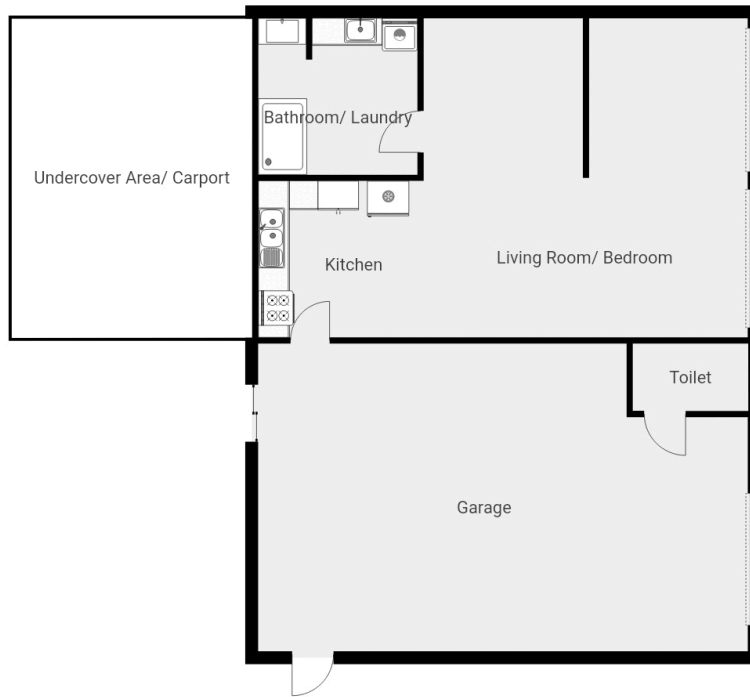
Land Area 0.50 ac

Agent Details

Matt Monaghan – 0417 000 300

Office Details

Stawell
189 Main Street Stawell VIC
3380 Australia
03 5358 1300



THIS FLOORPLAN IS PROVIDED WITHOUT WARRANTY OF ANY KIND. SENSOPIA DISCLAIMS ANY WARRANTY INCLUDING, WITHOUT LIMITATION, SATISFACTORY QUALITY OR ACCURACY OF DIMENSIONS.